



Middle Orchard Street
Stapleford, Nottingham NG9 8DD

A New Development of Three, 2 Bedroom
Town Houses

£200,000 Freehold



We are pleased to announce the pre-launch of a brand new housing development in Stapleford.

The development will consist of 3 x two bedroom town houses, each with the benefit of parking for 2 cars. Located conveniently within walking distance of Stapleford town centre and a variety of amenities.

Currently under construction with an anticipated completion date of Christmas 2023, this small development is being built by a highly respected local developer to a particularly high standard and will have the benefit of a LABC 10 Build Warranty.

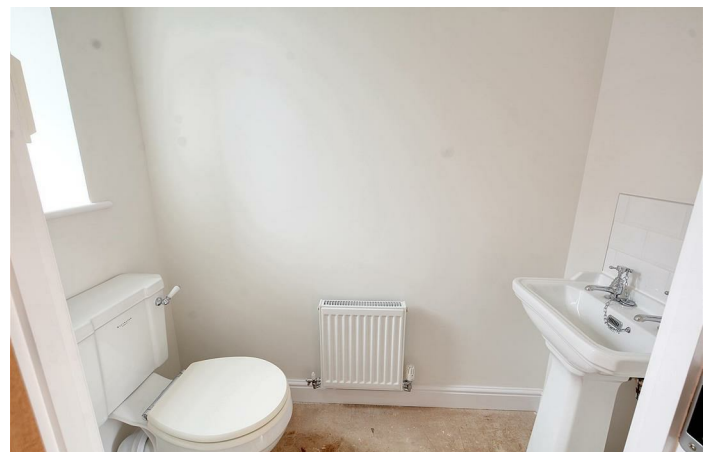
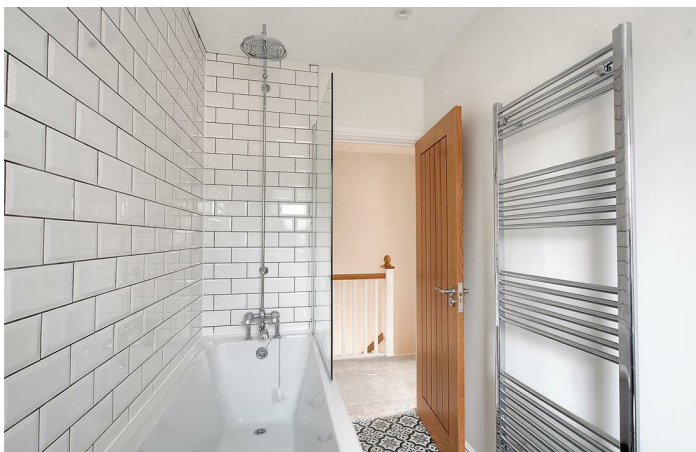
These energy efficient homes will be gas fired central heated and, of course, have uPVC double glazed windows throughout. The accommodation of each property will comprise an entrance hall, cloakroom/WC, fully fitted quality kitchen to the front elevation and a living room with French doors open to the rear garden. To the first floor, the landing provides access to equally proportioned double bedrooms and a luxury bathroom/WC with shower.

The development is situated on the corner of Church Street and Middle Orchard Street in Stapleford. The properties will front Orchard Street with off-street parking in front of each house. The properties will have landscaped rear gardens with patio and lawn, Plot 1 having wraparound gardens being on the corner.

The position of the development is ideal for those not relying upon a car (although off-street parking is provided for each property) as many amenities are within walking distance, including the town centre itself, where there are local and national retailers, including Aldi. A health centre, library and a variety of useful services. There is a regular bus service on the doorstep, and for those wishing to commute there are good road networks linking Nottingham, Derby and Junction 25 of the M1 motorway, as well as the Park & Ride for the Nottingham tram.

Ideally suited to those looking to make the first step onto the property market, but equally for buy to let investors and those looking to downsize into a 'ready to move into', energy efficient home in a convenient location.

To register your interest and for more information, contact the Stapleford Branch of Robert Ellis.



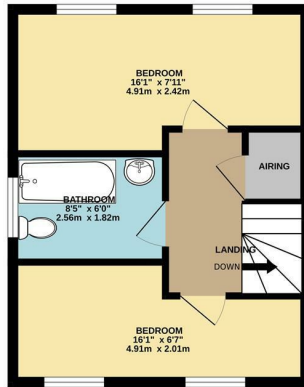
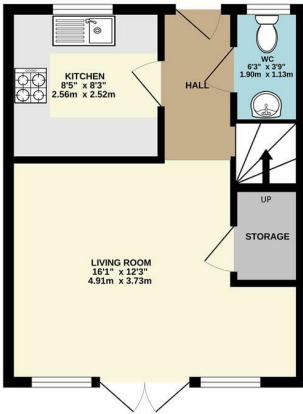
IMAGES

The images are for illustration purposes only. The photographs are from a previous development and are to give an impression of the style and quality of finish.

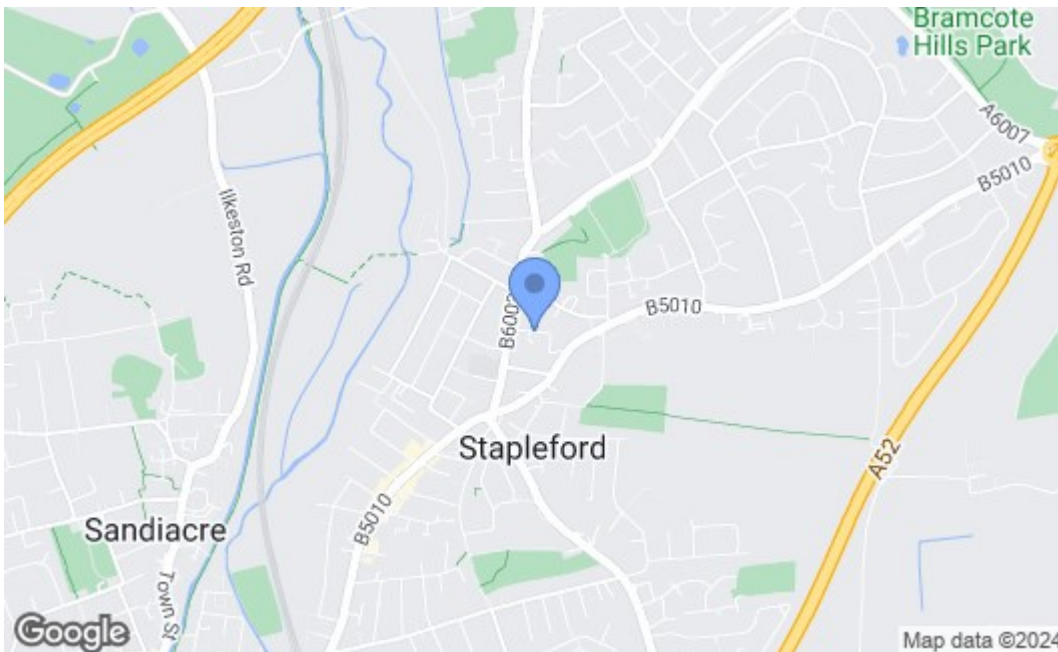


GROUND FLOOR

1ST FLOOR



Whilst every attempt has been made to ensure the accuracy of the floorplan contained here, measurements of doors, windows, rooms and any other items are approximate and no responsibility is taken for any error, omission or mis-statement. This plan is for illustrative purposes only and should be used as such for any prospective purchase. The services, systems and appliances shown have not been tested and no guarantee as to their operability or efficiency can be given. Made with Metropix ©2023



| Energy Efficiency Rating | | Current | Potential |
|---|--|-------------------------|-----------|
| Very energy efficient - lower running costs | | | |
| (92 plus) A | | | |
| (81-91) B | | | |
| (69-80) C | | | |
| (55-68) D | | | |
| (39-54) E | | | |
| (21-38) F | | | |
| (1-20) G | | | |
| Not energy efficient - higher running costs | | | |
| England & Wales | | EU Directive 2002/91/EC | |
| Environmental Impact (CO ₂) Rating | | Current | Potential |
| Very environmentally friendly - lower CO ₂ emissions | | | |
| (92 plus) A | | | |
| (81-91) B | | | |
| (69-80) C | | | |
| (55-68) D | | | |
| (39-54) E | | | |
| (21-38) F | | | |
| (1-20) G | | | |
| Not environmentally friendly - higher CO ₂ emissions | | | |
| England & Wales | | EU Directive 2002/91/EC | |

These details are for guidance only and complete accuracy cannot be guaranteed. If there is any point, which is of particular importance, verification should be obtained. All measurements are approximate. No guarantee can be given with regard to planning permissions or fitness for purpose. No apparatus, equipment, fixture or fitting has been tested.